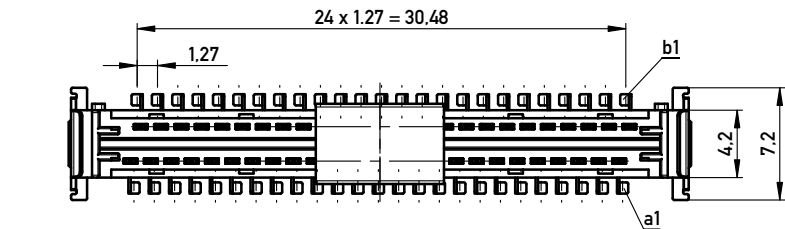
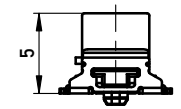
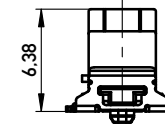


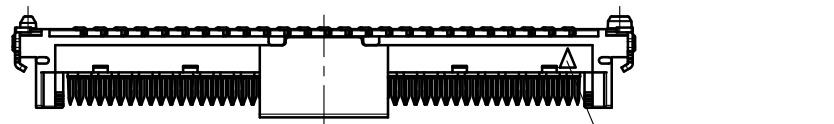
Drahtführung vorverrastet
wire guide loose mounted

Drahtführung verpresst
wire guide pressed on



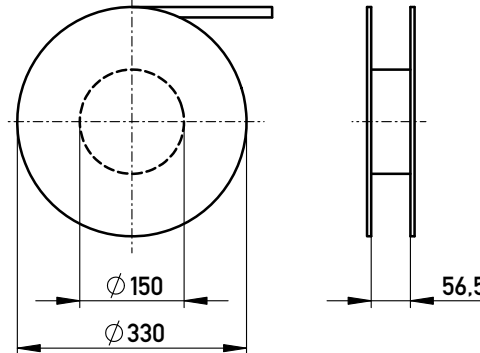
Verpackt in Gurtverpackung - *Tape on Reel Packaging*
Verpackungseinheit: 280 Stück - *Packaging unit: 280 pcs*

Drahtführungen nicht im Lieferumfang enthalten!
wire guides are not included in delivery!
Ident.Nr. für Drahtführungen (für 280 Teile): 244633
part no. for wire guides (for 280 parts): 244633

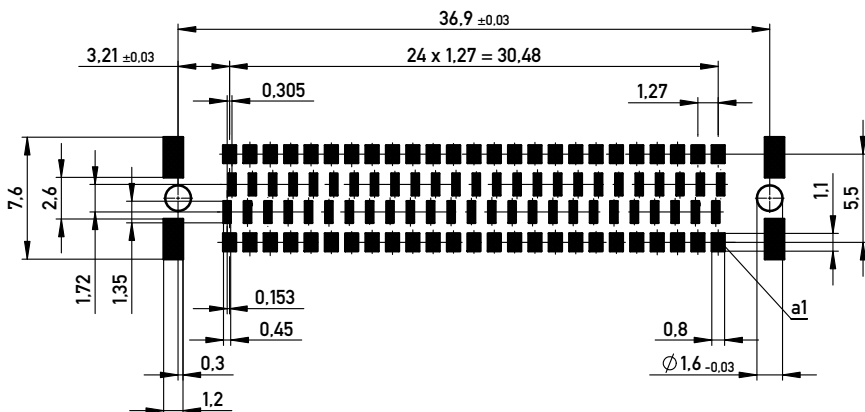
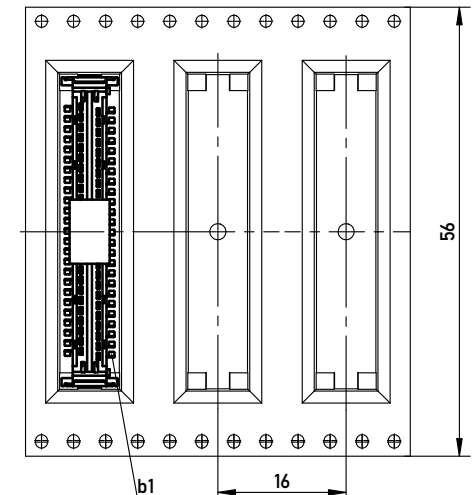


Leiterplatten-Layout Vorschlag für SMT
PCB-Layout Proposal for SMT

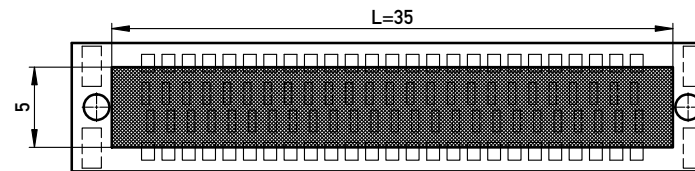
Kontaktbezeichnung bei b1
contact marking at b1



Abspulrichtung - *Reel off Direction*



Leiterplatten-Layout Rückseite
PCB-Layout Back Side



Freifläche Lx5mm auf der Leiterplatten-Unterseite
für das Einpresswerkzeug. Keine Bauteile platzieren in diesem Bereich.
PCB back side space Lx5mm for press tool.
Do not place any parts in this space.

■ Sperrfläche
Restricted area

Information:		Tolerances		Scale	3:1
All rights reserved. Only for Information. To ensure that this is the latest version of this drawing, please contact one of the ERNI companies before using.		Subject to modification without prior notice. Drawing will not be updated.		Designation	
www.ERNI.com		www.ERNI.com		1.27 DRC board on IDC 50-polig 50-contacts	
a		30.05.2012		244630	
Index		Date		I A3	
Class				SMCIDC	

Copyright by ERNI GmbH
Proprietary notice pursuant to ISO 9006 to be observed.